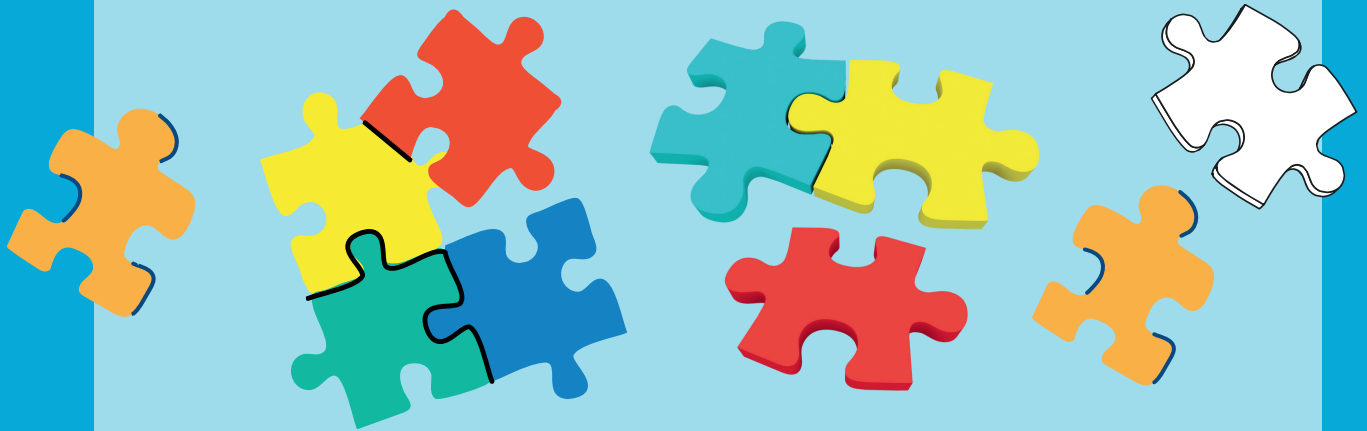


If you love jigsaw puzzles and
you love our library,

PUT THE PIECES TOGETHER



**FOR A FUNDRAISING
PUZZLE COMPETITION!**

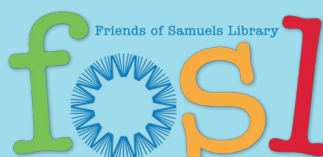
Celebrating National Puzzle Day

Saturday, January 27, 2:00 - 4:00 pm

Registration and Entry Fee Due by January 20

**Refreshments Served
Prizes Awarded**

**Sponsored by the Friends of Samuels Library and
Play Favorites: Toys & Games for All Ages!**



Registration Form for **NATIONAL PUZZLE DAY** **PUZZLE COMPETITION & FUNDRAISER**

Compete as a 2 person team in the **350** piece puzzle event, **OR**
compete as a family in the **400** multi-sized piece puzzle event.

Supervised children 6 -10 may participate in a **100-200** piece puzzle challenge.

Check one of the boxes below and complete the contact information

- Registering a 2 person team for the 350 piece puzzle event. Entry Fee for team: \$30
- Registering a 3-4 person team for the 400 piece family puzzle event. Entry Fee: \$40
- Registering children, aged 6 -10. No entry fee for children. Donations accepted.

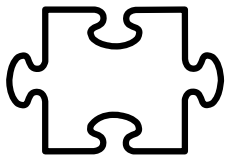
Children's names & ages _____

100% of your entry fee is a donation to the Library!

Contact Name: _____

Contact Information (E-mail or Telephone): _____

Return this form with entry fee to the Library by January 20.



Pay or Donate online at
puzzle.samuelslibrary.net
or use the QR code



.....
Tear here and keep the bottom portion as a reminder!

NATIONAL PUZZLE DAY **PUZZLE COMPETITION & FUNDRAISER**

SATURDAY, JANUARY 27, 2:00-4:00
AT SAMUELS PUBLIC LIBRARY

